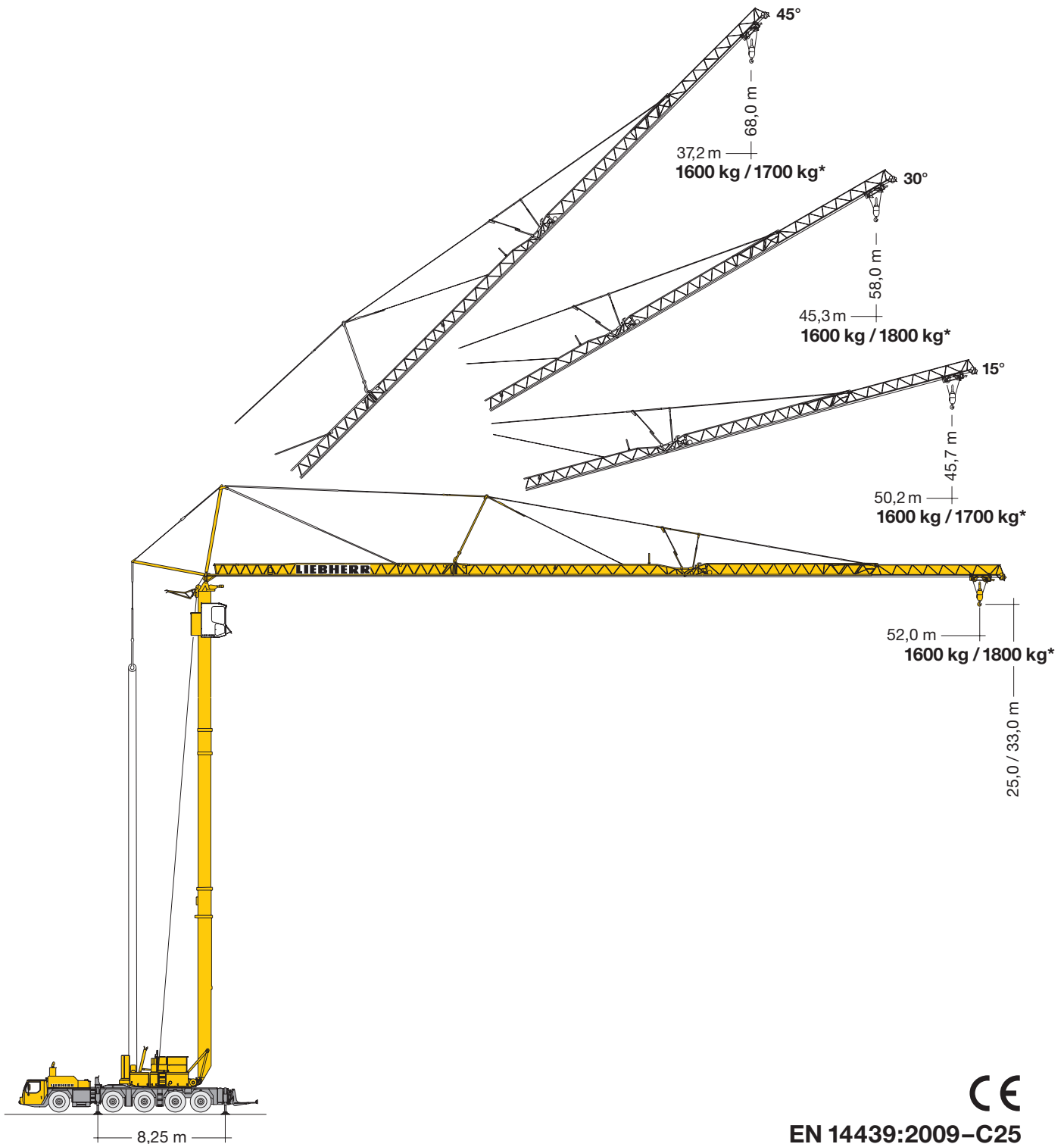
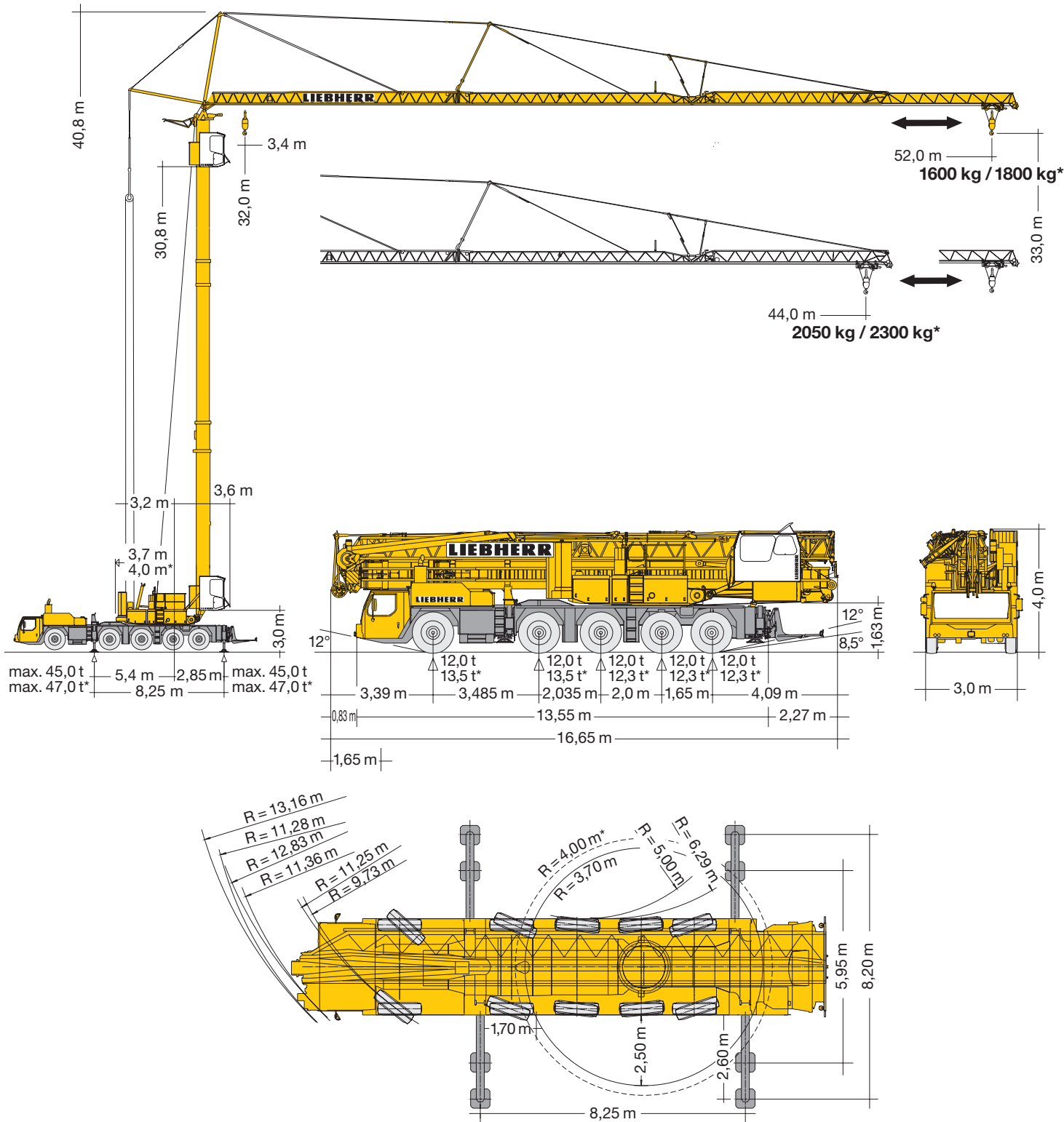


# Mobilbaukran MK 100 / MK 110\*

Mobile construction crane / Grue mobile de construction  
Autogrù edile / Grúa móvil de construcción  
Mobiele torenkraan / Мобильный строительный кран



# LIEBHERR



## Gewicht

Weight / Poids / Peso / Peso / Gewicht / Macca

**Gesamtgewicht** 60 000 kg

Total weight  
Poids total  
Peso totale  
Peso total  
Totaalgewicht  
Общая масса

\* **MK 110 mit 3,8 t Zusatzballast** / MK 110 with 3.8 t additional ballast / MK 110 avec lest additionnel de 3,8 t / MK 110 con zavorra addizionale da 3,8 t / con contrapeso adicional de 3,8 t / MK 110 met 3,8 t extra ballast / с дополнительным балластом 3,8 т

**60 000 kg**  
**+ 3 800 kg**

### Achslasten

Loads per axle / Charges par essieu / Carichi per asse / Peso por eje / Aslasten / Нагрузка на мосты

**Zusatzballast für Straßentransport demontieren, Ländervorschriften beachten.**

Remove additional ballast for road transport, observe country-specific regulations.

Démonter le lest additionnel pour le transport sur route, respecter les spécifications des pays individuels.

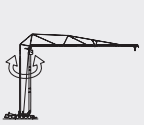


Smontare la zavorra aggiuntiva per il trasporto su strada, rispettare le norme nazionali.


Desmontar contrapesos adicionales para tránsito en carretera, véase condiciones en cada país.

Extra ballast dient voor wegtransport gedemonteerd te worden, landvoorschriften navolgen.


Для транспортировки по дорогам демонтировать дополнительный балласт, учитывать предписания, действующие для данной страны.

**> 12,0 t**


|  |                |           |
|--|----------------|-----------|
|  | 0 ↔ 0,8 U/min  | 7,5 kW FU |
|  | 0 ↔ 73,0 m/min | 4,0 kW FU |
|  | 0 – 30°        | 2 min.    |



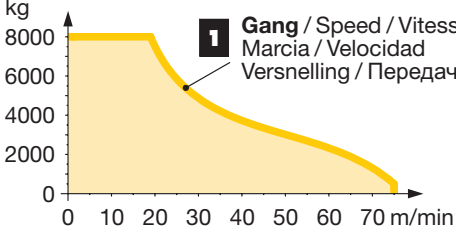
30,0 kW FU  
WIW 240 KY 003



↔ **stufenlos** / stepless / régl. continu  
regl. progressiva / sin escalones / traploos  
Бесступенчатый kg m/min




**1** 8000 0 ↔ 19  
500 0 ↔ 75



**1** Gang / Speed / Vitesse  
Marcia / Velocidad  
Vernelling / Передача

|  |   |     |     |     |      |      |      |      |      |      |      |      |      |     |     |   |
|--|---|-----|-----|-----|------|------|------|------|------|------|------|------|------|-----|-----|---|
|  |  | 1   | 2   | 3   | 4    | 5    | 6    | 7    | 8    | 9    | 10   | 11   | 12   | R1  | R2  |  |
|  | km/h  | 5,2 | 6,7 | 8,6 | 11,1 | 14,0 | 18,0 | 23,7 | 30,5 | 39,2 | 50,4 | 63,9 | 75,0 | 5,6 | 7,2 | 54%   |
|  | km/h  | 2,3 | 3,0 | 3,8 | 5,0  | 6,3  | 8,1  | 10,6 | 13,6 | 17,6 | 22,5 | 28,6 | 36,7 | 2,5 | 3,2 | > 60%   |

|  |            |            |  |                             |
|--|------------|------------|--|-----------------------------|
|  | 14.00 R 25 | <b>BGL</b> |  | C.0.08.0100<br>C.0.08.0112* |
|--|------------|------------|--|-----------------------------|

|   |                        |           |            |
|---|------------------------|-----------|------------|
|  | <b>400 V</b>           | <b>Hz</b> | <b>kVA</b> |
| 96,0 m  | 5 x 16 mm <sup>2</sup> | 50        | 43,0       |

## Aufstellvorgang

Erection procedure / Déroulement de montage / Procedimento di montaggio  
Procedimiento de montaje / Opstelling van de mobiele torenkraan / Процесс развертывания

